

# STEMCO®

# HUBODOMETER

## RELIABLE MILEAGE INFORMATION WITH GUARANTEED ACCURACY

### HUBODOMETER®



STEMCO's drive-less Hubodometer® offers road-proven accuracy backed by a 500,000 mile warranty.

### **An Indispensable Tool**

The STEMCO Hubodometer® is an indispensable tool for scheduling maintenance, determining lease charges, validating guarantees, and calculating costs per mile.

### **Reliable Mileage Information**

Hubodometers® are calibrated to perform on over 2,500 specific tire models and sizes to further ensure reliable mileage information.

### **Spring-loaded Counterweight**

Virtually eliminates spin when tires hit bumps and potholes, your assurance of greater accuracy.

### **Preset Your Hubodometer®**

STEMCO will preset your Hubodometer® with the mileage data you require for a nominal charge. Allow 3 days for shipping.

### **500,000 Mile Warranty**

Guaranteed over-life-of-tire accuracy backed by 500,000 mile warranty



*A Higher Standard of Performance.™*  
an EnPro Industries company

# HUBODOMETER<sup>®</sup>

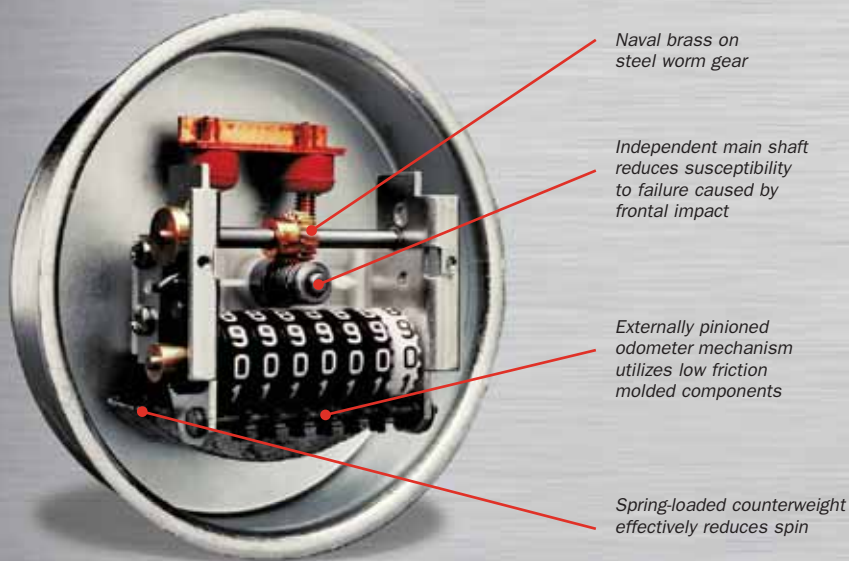
## GUARANTEED ACCURACY

**STEMCO<sup>®</sup>**  
A Higher Standard of Performance.<sup>SM</sup>  
an EnPro Industries company

### CONSTRUCTION AND DESIGN

- ⑧ Main shaft is independent of front cover, greatly reducing failure caused by frontal impact.
- ⑧ Unit is sealed for added durability in a moisture-controlled environment of polycarbonate and steel.
- ⑧ Externally pinioned odometer mechanism utilizes low-friction molded components. These features, plus nine permanently lubricated bronze bearings, eliminate wear and ensure long life.
- ⑧ Worm drive rotates parts less frequently, reducing wear.
- ⑧ Rugged construction. Naval brass on steel. No plastic drive components.

### SUPERIOR DESIGN GUARANTEES ±2% ACCURACY



### CALIBRATION AND INSTALLATION

To ensure accurate calibration, we've worked with the engineering staffs of all major tire manufacturers. We have compiled fleet data on more than 2,500 tire models and sizes.

In addition, STEMCO calibrations are based at the mid-life of tire tread (not the depth of new tire tread), one more reason we can guarantee ±2% accuracy over the life of the tire.

For proper calibration of any STEMCO Hubodometer<sup>®</sup>, all you need to know is tire make, model and size. With this information and our Tire Classification catalog (which includes radials and low-profile tires), you can quickly determine the part number for the correct Hubodometer.<sup>®</sup>

STEMCO offers a pre-set Hubodometer<sup>®</sup> program at a nominal cost. Pre-set orders are shipped within 3 working days from the Longview, Texas warehouse. For more information, contact STEMCO Customer Service.

For a FREE catalog, call STEMCO at 1-800-527-8492 or your local STEMCO distributor.

Hub caps, hub cap mounts and universal brackets are available for all popular makes and models. For quick and easy installation, use any of three different options: (1) aluminum hub cap with hubo window, (2) grilamid Hubodometer<sup>®</sup> hub cap or (3) bracket.

### WARRANTY

The STEMCO Hubodometer<sup>®</sup> is warranted for 500,000 miles when installed in accordance with its specifications. See your STEMCO distributor for details.



347-Series  
Aluminum Hub cap with Hubo Window



640-Series  
Grilamid Hubodometer<sup>®</sup> Hub Cap



610-Series  
Bracket Installation

STEMCO - USA  
P.O. Box 1989 · Longview, TX 75606-1989  
(903) 758-9981 · 1-800-527-8492 · FAX: 1-800-874-4297  
[www.stemco.com](http://www.stemco.com)

STEMCO - Canada  
5900 Ambler Drive, Units 4 & 5 · Mississauga, ON L4W 2N3  
(905) 206-9922 · 877-232-9111 · FAX: 877-244-4555

ISO/TS 16949  
STEMCO and Hubodometer are registered trademarks of  
STEMCO LP ©2009 STEMCO LP Truck Products Division  
Printed in the USA · Part No. 571-2905  
Hudson 10-182 Rev. 11/09

**TQM<sup>SM</sup>**  
TOTAL QUALITY MAINTENANCE<sup>SM</sup>